

USER MANUAL

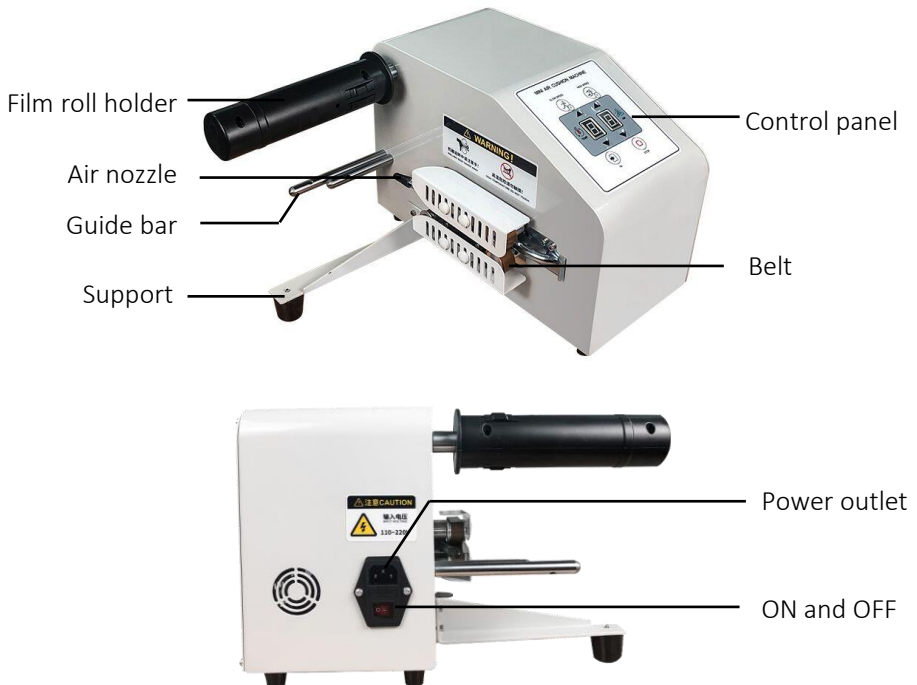
A2 AIR CUSHION MACHINE

Box contents

- Air cushion machine
- Film roll holder
- Power plug
- Support
- High temperature adhesive tape
- Belts
- Blades
- Guide bar
- Hexagon spanner
- User manual









PARTS



TECHNICAL SPECIFICATIONS

Model	A2	Size of machine	37*17*25cm
Capacity factor	200W	Size of package	40*26.5*31cm
Input voltage	AC 110-220V/50-60HZ	Net weight	8KG
Speed	9m/min or 16m/min	Gross weight	8.5KG

KEYPAD FUNCTIONS

	Slow speed / start button	Slow speed (9m/min)
	High speed button / start button	High speed (16m/min)
	Arrow up	Increases the temperature Increases the air
	Arrow down	Decreases the temperature Decreases the air
	Enter button	Material in
	Stop button	Stops the machine

SETTING UP THE DEVICE

ASSEMBLY OF THE PARTS

1. Use a hexagonspanner to removethe screws at theposition of thesupport frame



2. Install thesupport frame andfix the screws



3. Install the guidebar



4. The guide bar isshown in the imageabove



5. Use a hexagonspanner to passthrough the smallhole of thematerial bar



6. Hold the hexagon spanner. Rotate and fix with the material bar



7. Find the power connector



8. Connect andelectrify and checkthe red light for theconnection



SETTING UP THE DEVICE

LOADING A FILM ROLL

1. Load the film



4. Press the “In” button and pull the films at the same time



2. Pass the film through the guidebar and into the machine air nozzle



5. Press the slow speed / high speed button to start inflation



3. Make contact with feed belt



6. Press the stop button to stop

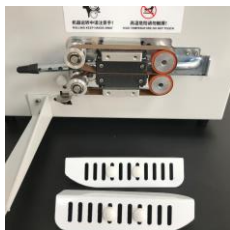


Compatible air cushion films:

Item	Size	Speed	Temperature	Air
air pillow bag	20*10cm	slow speed	4-6	3-4
	20*12cm	high speed	4-6	4-5
	20*15cm	slow speed	4-6	2-3
	20*20cm	high speed	4-6	2-3
air bubble roll	40*33cm	slow speed	3-7	9
		high speed	3-8	9
multi pillow roll	40*25cm	slow speed	3-7	7-8
		high speed	3-8	8-9
double pillow roll	40*15cm	slow speed	3-7	7-8
		high speed	3-8	8-9

* Test through different parameters if you are not satisfied with result. Welding depends on humidity, roll size, material thickness, plastic, heat, speed and compressed air.

BELT REPLACEMENT



1. Remove the protective cover shell

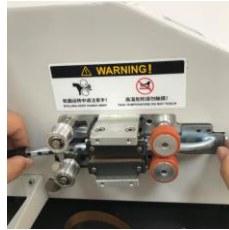


2. Hold down with your hand, then buckle to the left



3. Press the outside with your thumb, and press the inside with your indexfinger to push gently
4. The belt can be removed when the belt is loose (the belt installation method is the same)

BLADE REPLACEMENT



1. Loosen the fixing screw of the air pipe.



2. Loosen the blade on the air pipe



3. Take out the spare blade for replacement

4. The high-temperature adhesive tape is attached to the heating module and can be taken out by loosening the fixing screws.

* When replacing the high-temperature adhesive tape, make sure that the machine is powered off.

* It is recommended that the heating module has cooled for more than 30 minutes.